



The **Fr. Jim Willig Chapel** overlooks the Little Miami River and is open for prayer and quiet reflection.

The chapel is named after Fr. Jim Willig, who died of cancer at age 50. Fr. Jim's bravery in the face of the disease, and his willingness to help others, inspired friends and family to renovate a former train depot into a memorial housing his writings and recordings.




JESUIT
Spiritual Center
at MILFORD



The **William Splain Cabin**, located on the peaceful banks of the Little Miami River, offers the perfect setting to step off life's carousel for a while. If you're looking to clear your head, or to refresh yourself spiritually or to spend some special time with your spouse, the Splain Cabin is just the place. The cabin features one bedroom, full appliances and a porch overlooking the river.



For more information about our retreat facilities, visit jesuitspiritualcenter.com or call (513) 248-3500, ext. 22.

The Jesuit Spiritual Center at Milford
5361 S. Milford Rd., Milford, OH 45150

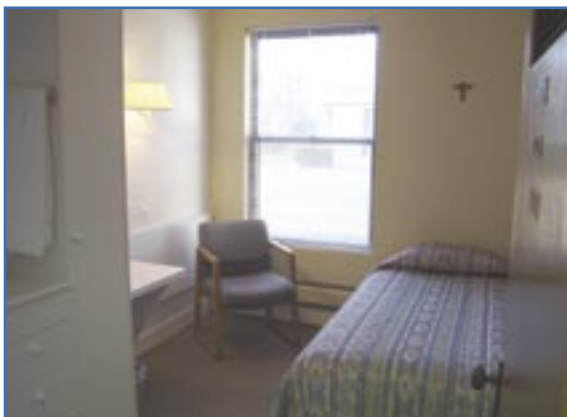
Retreat Facilities of the Jesuit Spiritual Center





The **Pedro Arrupe Building** is the flagship facility of the Jesuit Spiritual Center, and its oldest and largest. Constructed by returning World War II servicemen, the building includes air-conditioned rooms, a large chapel, a meeting room overlooking a secluded corner of the 37-acre campus, an exercise room, and excellent meals served in the building's own kitchen and dining hall.

Each of the sixty private rooms has its own sink and closet, with full bath facilities just a few doors away. Around the building, paved walkways meander through gardens and over wide lawns. The Arrupe Building is ideal for larger groups desiring privacy for prayer and personal reflection.



The **Loyola Building** sits back an oak-lined drive between the peaceful flow of the Little Miami River and the ample grounds of the old Jesuit Novitiate. Constructed in 1969, the Loyola Building features forty-seven air-conditioned rooms with sinks and closet space, a large meeting room, five smaller meeting rooms, and a large chapel that can be rearranged for different kinds of retreats. Because of its versatility, the building is used by a variety of organizations, including school youth groups, orders of religious and church groups.

Like the Arrupe Building, the Loyola Building features a kitchen and dining hall staffed by professional chefs. Its grounds include overviews of the surrounding natural setting, pathways, a labyrinth overlooking the river, and open fields for sporting events.



The **Elias Thomas Retreat House** caters to smaller retreat groups of between four and eight people, and includes its own chapel, meeting area and kitchen. The Thomas House incorporates the historic “greenhouse,” built in the 1890s, and a new addition including bedrooms and bathrooms. It's located between the Loyola Building and the Jesuit residence and is only steps from the Little Miami River, a prayer labyrinth and the Willig Chapel.



Some of the groups using the Thomas House include parish and school staffs, religious communities and planning committees.

Donated to the Jesuits in the 1920s, the **Schott Pavilion** is today used for one-day retreats and for meetings of large groups seeking special space in which to gather. The octagonal, stone meeting hall can easily host groups of eighty people.

The Pavilion has a dining room on its lower level and access to the kitchen of the Loyola Building next door. It's surrounded by trees and a park-like setting.